

MASTER OF SCIENCE IN SOFTWARE ENGINEERING



ITU

Admission Requirements

Sealed Official Transcripts From All Universities Attended

Minimum cumulative undergraduate GPA of 2.75 or graduate GPA of 3.0, on a 4.0 scale. Transcripts, listing courses taken and grades received, must be mailed directly from the institution or through a verified e-Transcript provider. [International Students please review additional requirements listed below.](#)

Statement of Purpose (500-750 words)

Please describe why you are interested in the intended program of study, and how you hope to use this education to achieve your future goals.

Resume Demonstrating Relevant Work or Volunteer Experience

Two pages maximum.

GRE or GMAT Scores

Recommended. Scores must be sent directly from the testing center.

Two Letters of Recommendation

Recommended. Required if minimum GPA is not met. Letters should speak to the student's professional and academic experience and potential to succeed in graduate school.

INTERNATIONAL APPLICANTS:

Foreign credential evaluation for any non-US degrees

ITU will accept foreign transcript evaluations from these approved third-party service providers:

- International Education Research Foundation (IERF)
- World Education Services (WES)
- A2Z Evaluations
- Other NACES-recognized members

Proof of English Proficiency

ITU looks for scores of 80+ for TOEFL iBT or 6.5+ for IELTS.

For a list of additional acceptable ways to satisfy the requirement, please contact an admission representative.

ADMISSION CYCLES

Fall (Classes start September) May 15 - Aug. 15

Spring (Classes start January) Sep. 15 - Dec. 15

Summer (Classes start May) Jan. 15 - April 15



INTERESTED?

Learn more at
ITU.EDU
or email
admissions@itu.edu

Software engineering applies principles of computer science and mathematics to achieve cost-effective solutions to software problems. The software engineering curriculum places primary emphasis on the technical aspects of building and modifying high quality software systems.

Curriculum

ITU's MSSE curriculum is concerned with the technical and management issues of software engineering, with a primary emphasis on the technical aspects of building and modifying high-quality software systems. The program prepares students for careers in businesses that build and sell software, in Internet-based companies, electronic business organizations, diverse research and development laboratories, aerospace companies, banks, and insurance companies.

Job Possibilities

Business Analyst, Cognos Developers, Computer Programmer, Data Analyst, Data Collector, Database Developer, Oracle Applications Developer, Database Campaign Analyst, Programmer Analyst, Java Developer, Unix System Administrator, LTE Field Tester, Software Engineer, Application Programmer, Network Administrator, QA Analyst, Quality Analyst, Sebel Administrator, Software Analyst, Software Developer, Software Quality Engineer, Software Test Engineer, SQL Developer, System Administrator, Systems Analyst.

(Based on real job and internship positions obtained by ITU graduates)

Program Requirements

To complete this program each student must complete a total of 36 credit hours:

4 CORE COURSES (12 Credit Hours)

SWE 500 Software Engineering
SWE 600 Advanced Software Engineering
SWE 602 Software Requirements Elicitation
SWE 680 Software Architecture

CAPSTONE PROJECT: 3 credit hours

INTERNSHIP: 1-9 credit hours

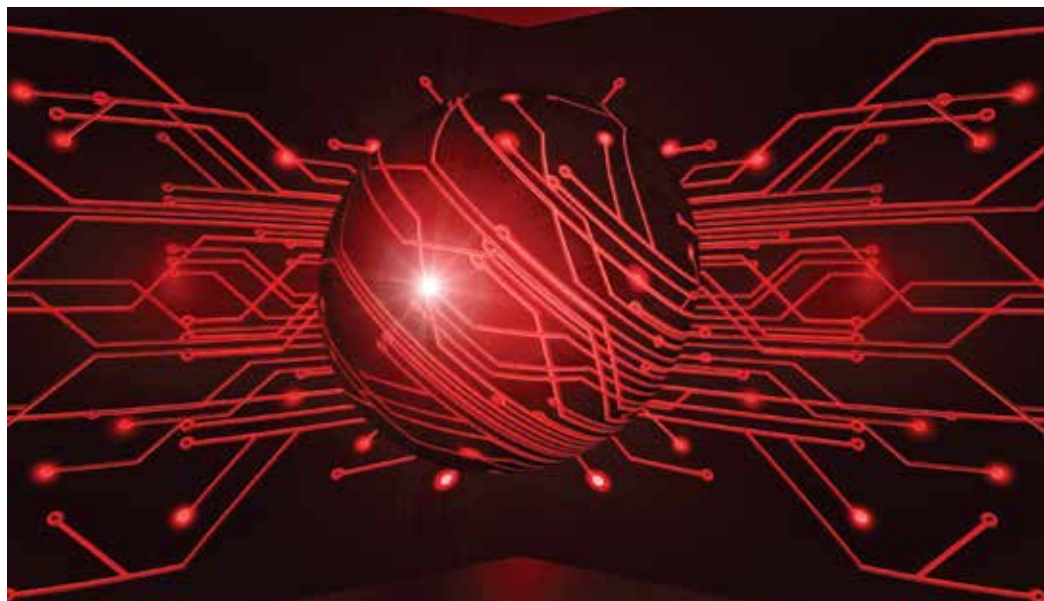
ELECTIVES (12-20 Credit Hours)

Cross Disciplinary Elective: up to 3 credit hours

Transfer Credits: up to 9 credit hours (counts towards electives)

MSSE Electives: up to 20 credit hours (a maximum of 3 credit hours of mathematics will be counted)

These requirements apply to students admitted for FALL 2016 and beyond.



软件工程学 硕士



ITU

录取要求

入读过的所有大学的密封成绩单

本科累积GPA需2.75以上，研究生3.0以上（总分4.0基础上）。成绩单需列出修过的课程和相应分数，须从大学直接密封寄出，或由经认证的提供电子成绩单的机构寄出。
国际学生请注意补充要求。

个人陈述 (500-750字)

请陈述为什么对某个学科感兴趣，计划怎样通过学习来实现你的未来目标。

简历

列举相关工作或志愿者经历（两页以内）。

GRE或者GMAT 成绩

建议提供，成绩必须由考试中心直接寄出。

两封推荐信

建议提供，GPA 没有达到最低要求的学生则必须提供。推荐信需陈述学生的专业和学术经历，以及成功完成研究生学习的潜力。

国际学生申请者：

成绩单认证

所有非美国学历需经第三方认证机构认证，ITU接受的认证包括：

- 国际教育研究基金会 International Education Research Foundation (IERF)
- 世界教育服务社 World Education Services (WES)
- A2Z鉴定处 A2Z Evaluations
- 其它全美学历认证协会 (NACES) 成员单位

英语水平要求

ITU要求托福成绩80分以上，雅思成绩6.5以上。若使用其它方式证明达到英语水平要求，请联系招生部负责人。

申请时间

秋季学期：9月开学 申请日期：5月15日-8月15日

春季学期：1月开学 申请日期：9月15日-12月15日

夏季学期：5月开学 申请日期：1月15日-4月15日



INTERESTED?

Learn more at
ITU.EDU
or email
admissions@itu.edu

软件工程学应用计算机科学和数学原理，为软件问题提出有效的解决方案。课程重点在于提高学生构建和完善高质量软件系统的技术水平。

课程概述

ITU软件工程学硕士学位的课程内容围绕软件工程的技术和管理，重点培养学生构建和完善高质量软件系统的技术能力。学生将来就业范围广泛，包括软件业、互联网公司、电子工程公司、各种研发实验室、航空航天公司、银行和保险公司。

就业方向

商务分析师、Cognos软件开发、电脑编程、数据分析、数据采集、数据库开发、甲骨文应用软件开发、数据库营销分析师、系统分析师、Java开发师、Unix系统管理员、LTE现场测试员、软件工程师、应用程序员、网络管理员、质量控制分析员、质量分析员、Sebel 管理员、软件分析员、软件开发、软件质量工程师、软件测试工程师、SQL开发师、系统管理员、系统分析师。（以上职位来自于ITU毕业生实际就业和实习岗位）。

课程要求

学生必须完成36个学分的课程以获得软件工程硕士学位：

4门核心课程（共计12个学分）

SWE 500软件工程
SWE 600高级软件工程
SWE 602软件需求获取
SWE 680软件体系结构

综合实践：3个学分

实习：1 - 9个学分

选修课程：12 - 20个学分

非相关学科课程：最多3个学分

转入学分：最多9个学分（作为ITU选修课程）

软件工程硕士学位选修课程：最多20个学分（最多3个数学学分可计入其中）

上述要求适用于2016秋季及之后入学的学生。

